

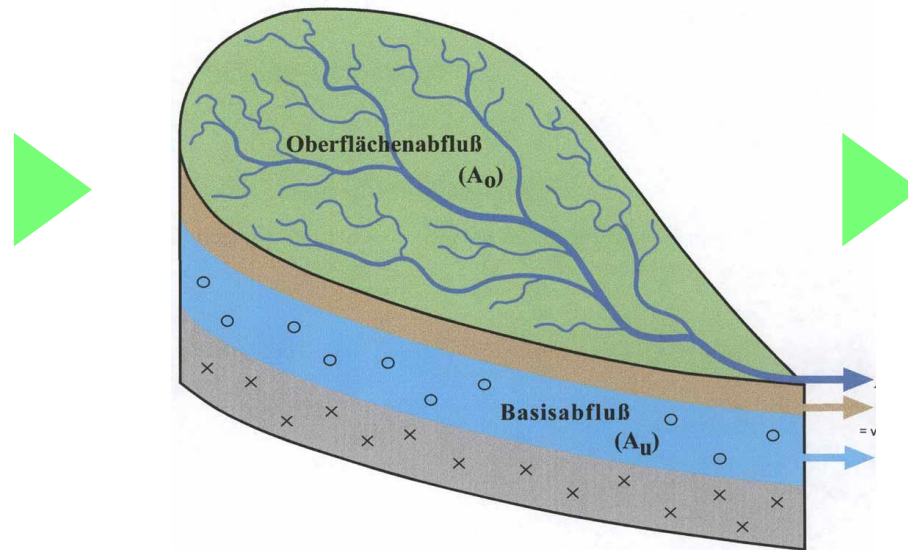
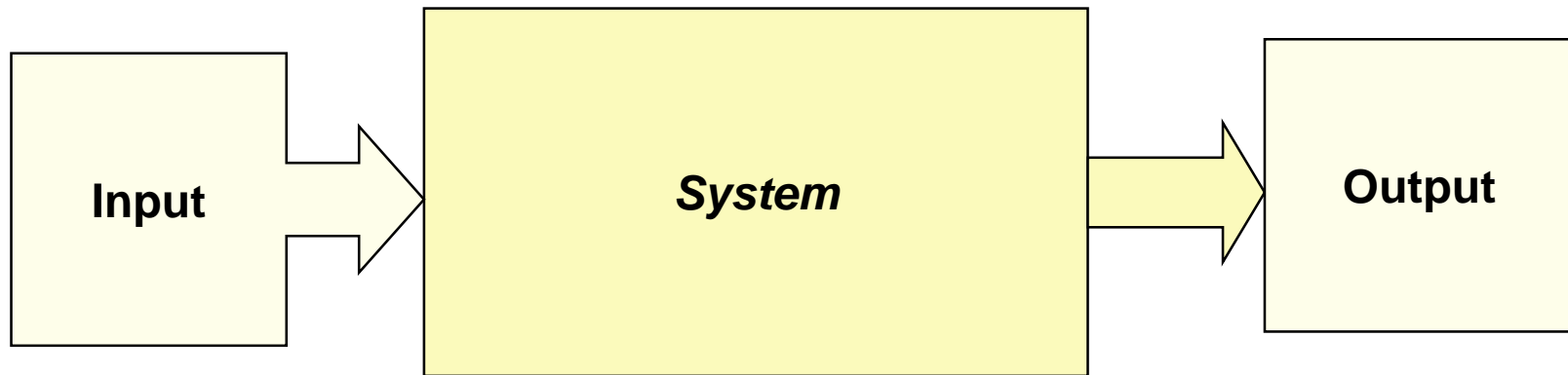


Urwald um Manaus, Brasilien
Yann Arthus-Bertrand, 2002



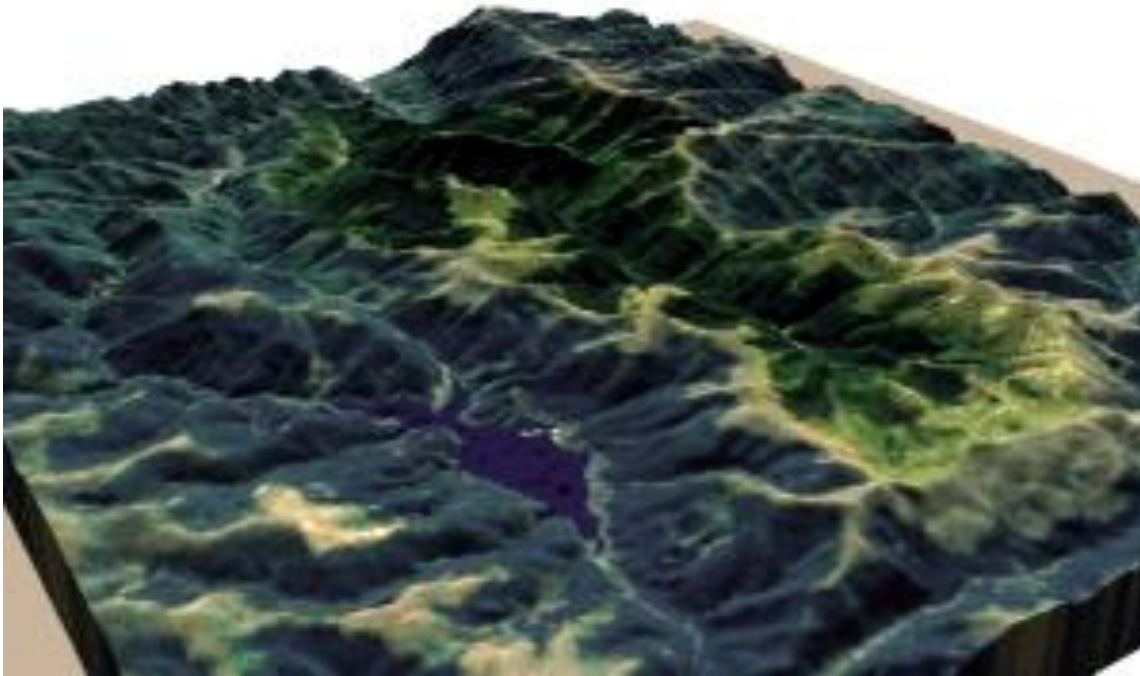
Quelle: NordNordWest unter „[CC-BY-SA-3.0-DE](https://creativecommons.org/licenses/by-sa/3.0/de/)“

Basins



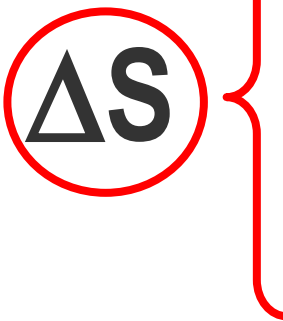
IHF, 2005

Basin Functions



*Raului Latorita, Romania, [Public Domain](#)
Topographic data SRTM from NASA and World Imagery –
NASA World Wind & 3Dem & Inkscape*

Water Balance

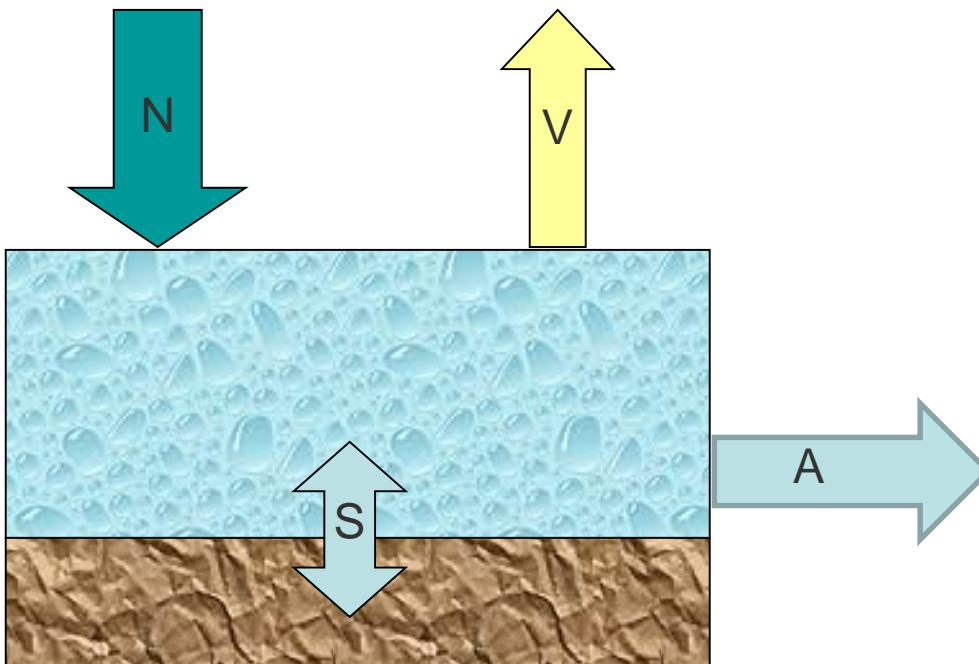
$$N = A + V + \Delta S$$


N : **Rainfall**
A : **Runoff**
V : **Evaporation**
ΔS : **Storage**

[mm]

Water Balance

$$(N) = (A) + (V) \pm (S)$$

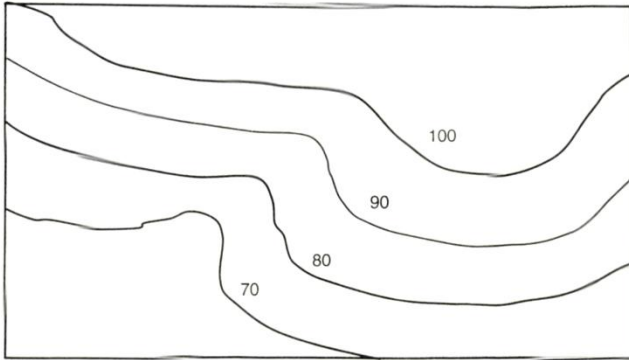


Delineation

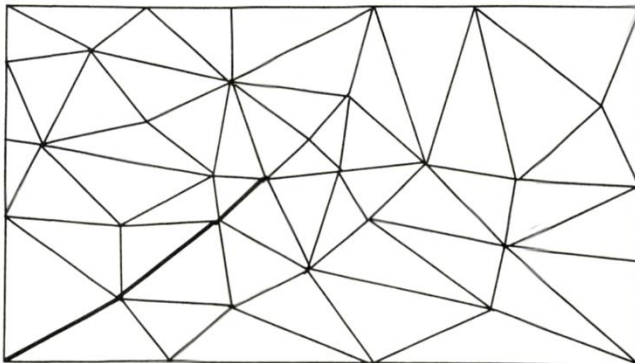


(Maimai Catchment, Neuseeland ;Photo: Jeff McDonnell)

Data Types

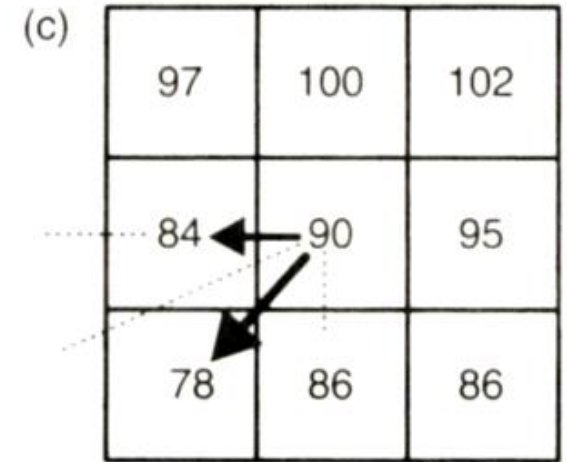
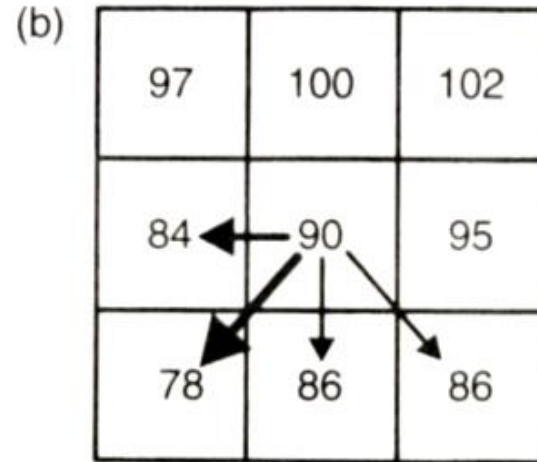
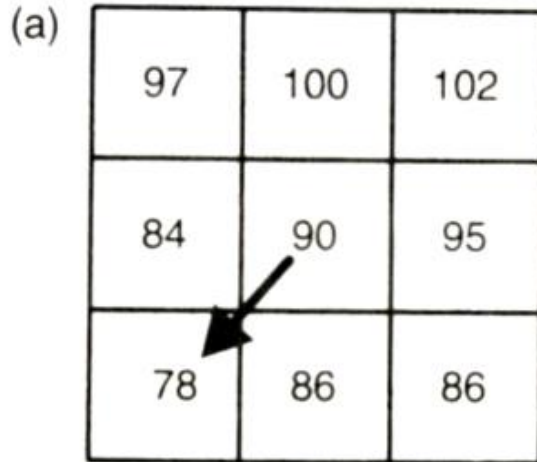


95	103	103	104	104	105	105	105	104	103	103
86	91	95	95	97	100	102	103	103	103	100
78	80	82	84	84	90	95	100	103	100	95
71	72	72	70	78	86	86	95	96	95	86
69	69	67	68	75	80	82	84	84	82	80
69	66	68	69	70	72	75	76	78	77	76



Beven (2003)

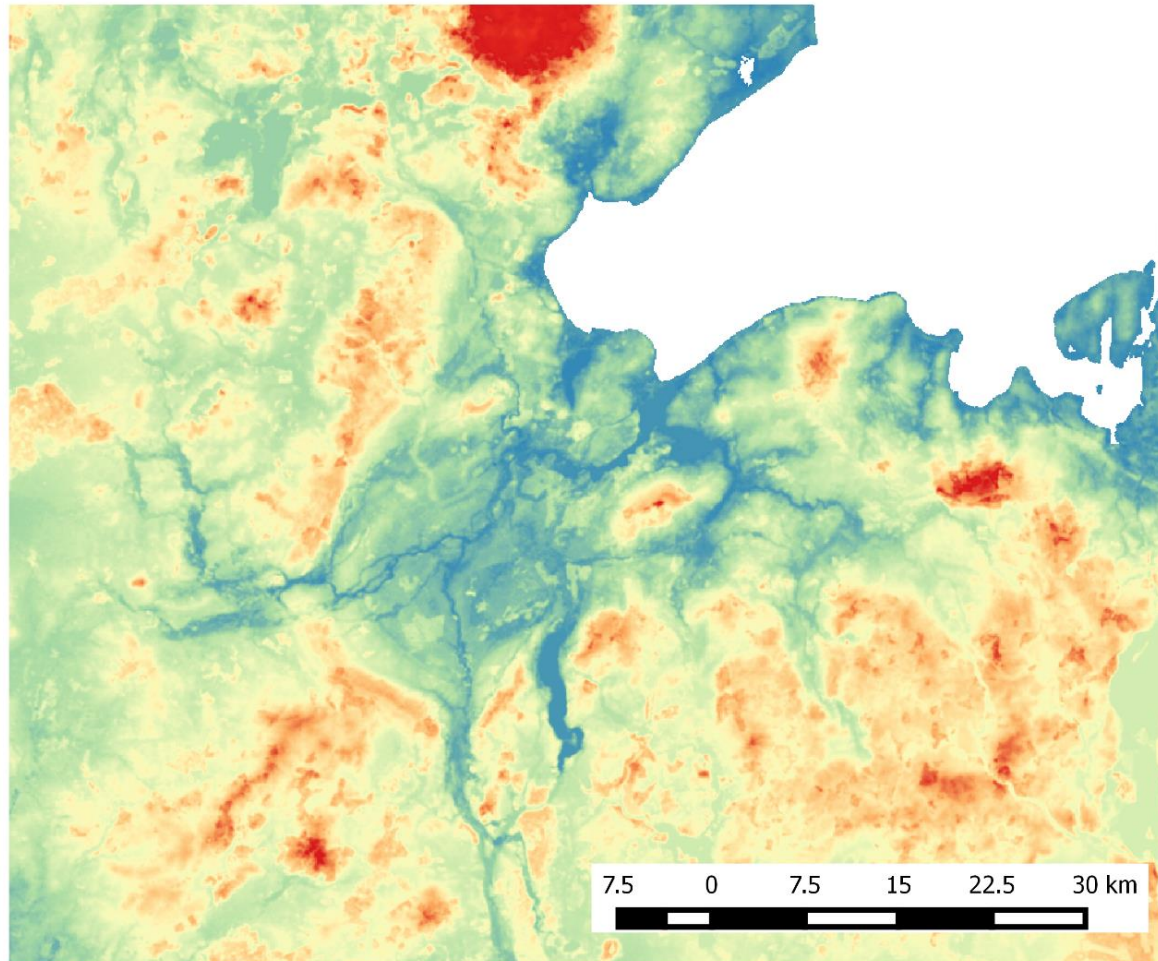
Raster



Beven (2003)

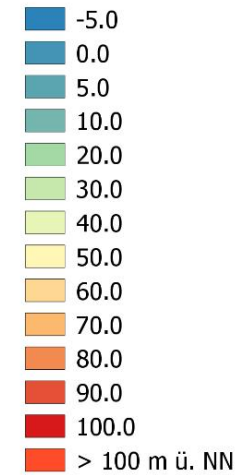
DEM

Trave and Wakenitz



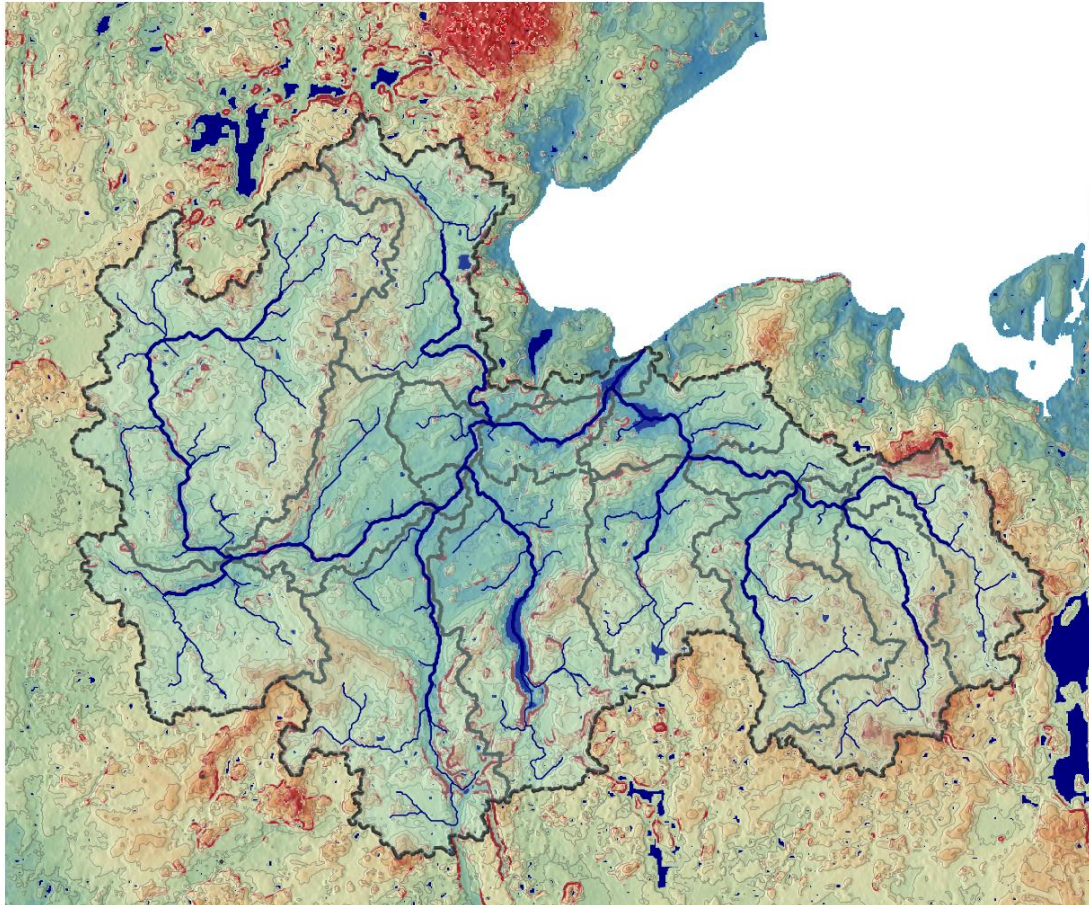
Legend

Höhenmodell



Külls, 2014 unter Verwendung von SRTM, NASA, 2002

Delineation Trave and Wakenitz







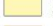

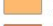









Legend

Hangneigung

-  See
-  flach
-  3.0
-  4.0
-  4.5
-  5.0

Höhenmodell (gefüllt)

-  0.0 ü. NN
-  5.0
-  10.0
-  20.0
-  30.0
-  40.0
-  50.0
-  60.0
-  70.0
-  80.0
-  90.0
-  100.0
-  200.0 m ü. NN

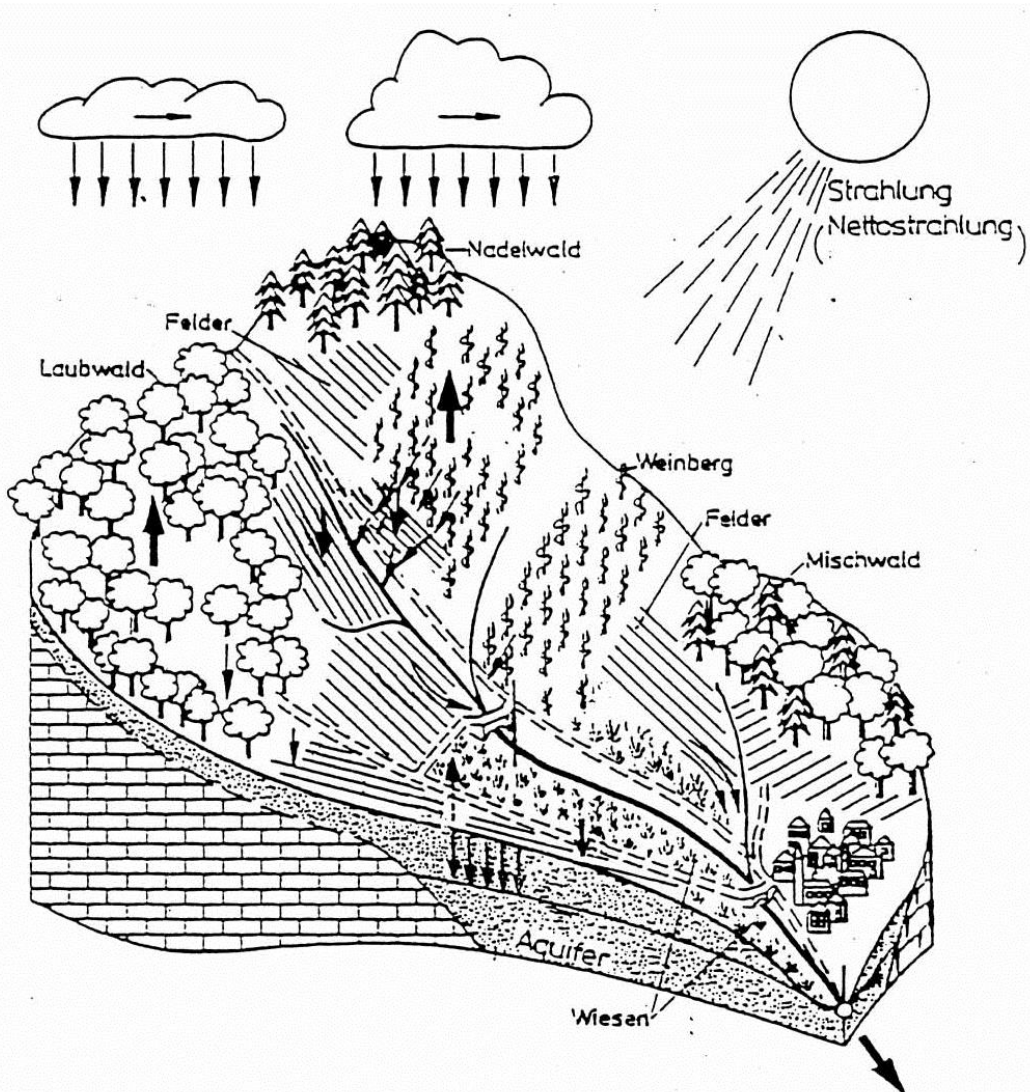
-  Flüsse
-  Trave Einzugsgebiet
-  Trave Teileinzugsgebiete

5 0 5 10 km

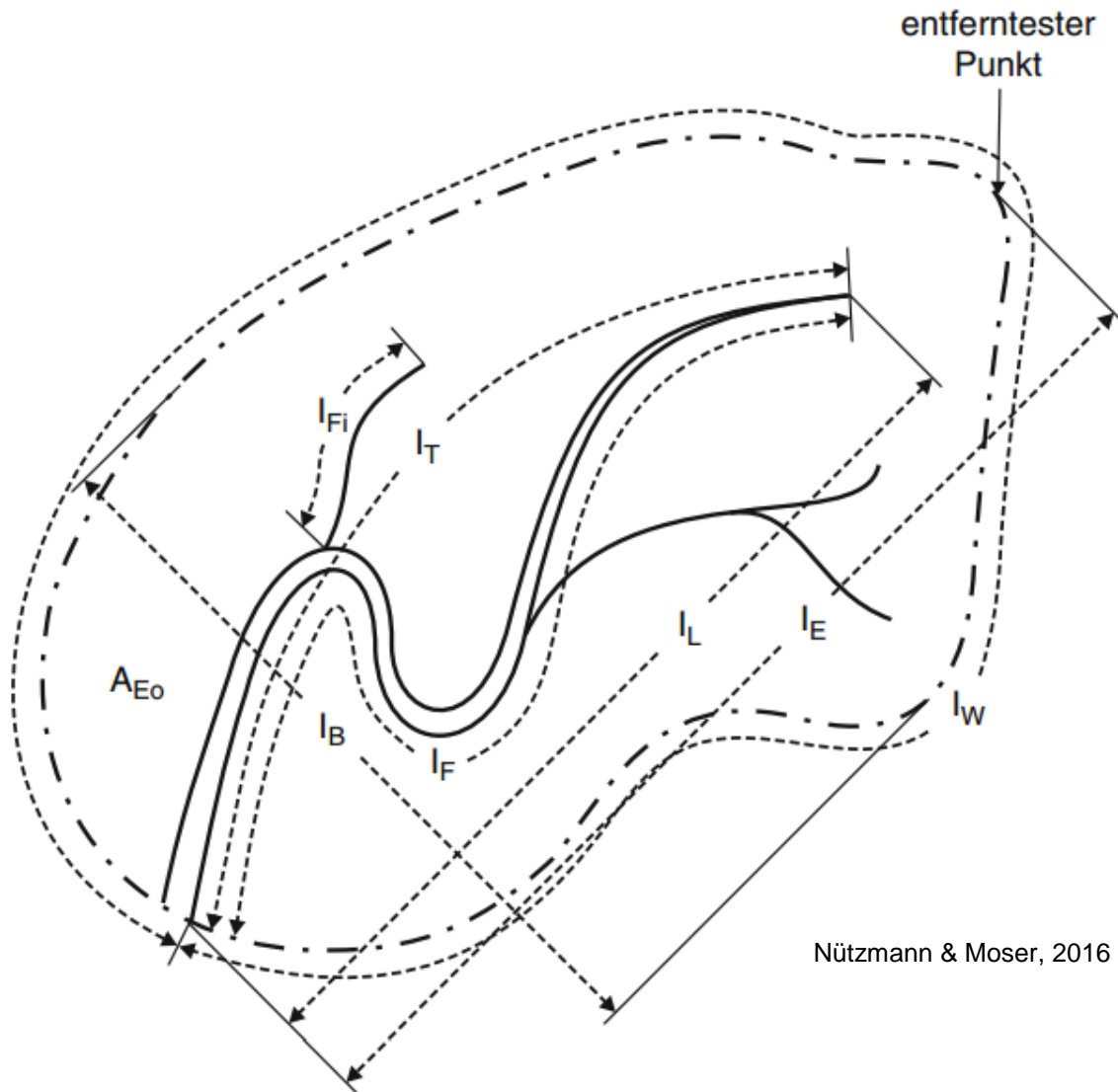


Külls, 2014 unter Verwendung von SRTM, NASA, 2002

Properties

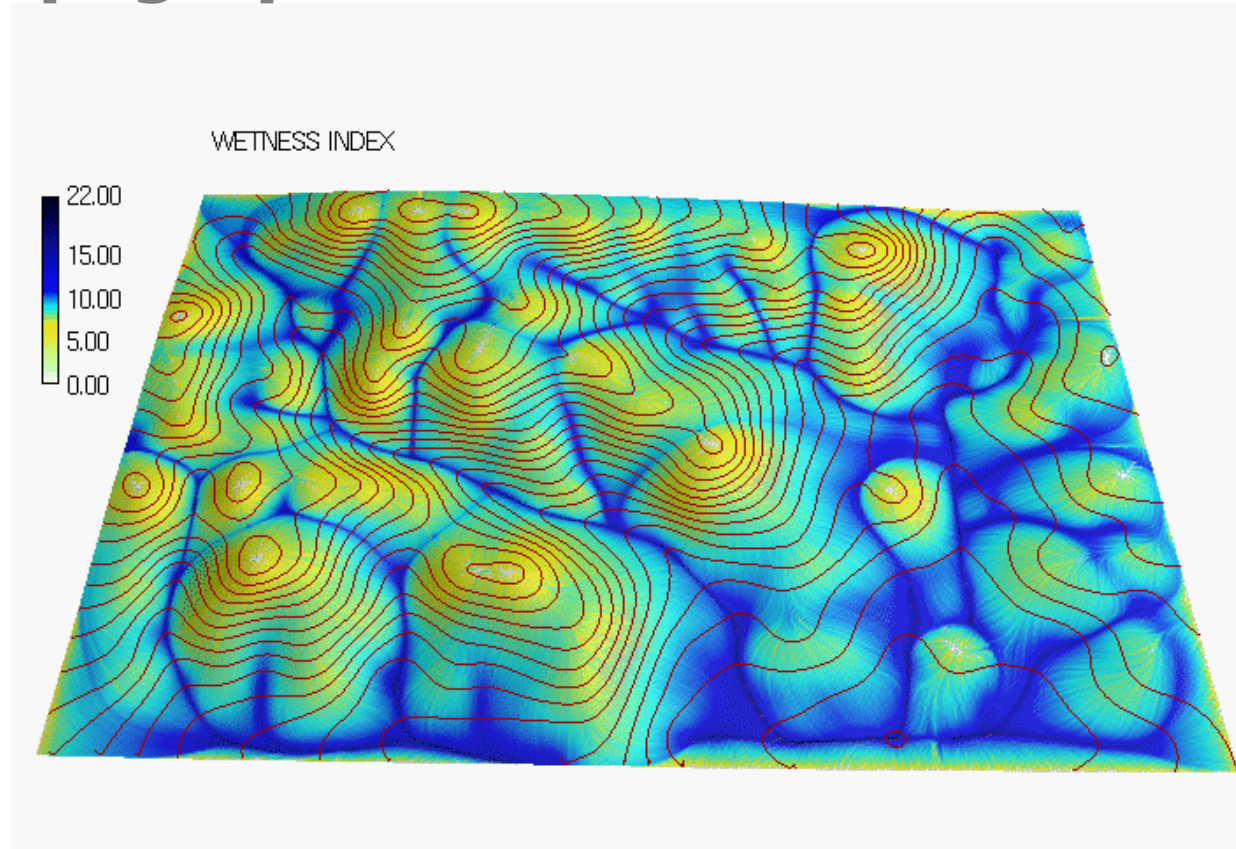


Shape



Area A_e
 A_{ei}
 I_L
 I_E
 I_W
 I_F
 I_{fi}
 I_T

Topographischer Index



Regional Hydrology

Station	Name	Area km ²	L1	Start	End	MQ	MNQ	BFI	Recharge
						m ³ /s	m ³ /s	-	mm/y
70011	Kibungo	302.61	NAKU	1996	2012	1.11	0.65	0.5856	68
70004	Kanzenze	13934.5	NAKU	1971	1988	116.2	83.18	0.7158	188
70001	Gisenyi	334.44	CKIV	1975	1984	2.76	2.14	0.7754	201
70002	Nyundo	213.91	CKIV	1976	1997	1.99	1.49	0.7487	219
70009	Kibeho	435.1	NAKN	1972	2012	3.46	2.92	0.8439	211
70026	Rugezi	188.54	NMUK			1.54	0.88	0.5714	147
70003	Rusumo	30632.6	NAKU	1955	2012	234.6	198	0.844	203
70006	Mfune	15534.6	NAKU	1971	2012	136.1	116.65	0.8571	236
70005	Kigali rd Butare	8335.3	NNYL	1961	2000	90.9	66.79	0.7348	252
70007	Mwaka	2444.4	NNYU	1971	2012	33.2	21.3	0.6416	274
70008	Ngaru	5235.9	NNYL	1960	2000	62.6	53.5	0.8546	322
70010	Butare/Ngozi	1477.2	NAKN	1971	2012	21.9	14	0.6393	298
70012	Ngaru	1885.6	NMUK	1972	2000	28.7	19.3	0.6725	322
70013	Nyakinama	1063.6	NMUK	1995	2012	12.9	12.1	0.938	358
70014	Nyabisindu	594.3	NNYU	1972	2012	3.4	2.54	0.7471	134
70015	Kimisagara	1540.6	NNYL	1972	1979	4.82	3.21	0.666	66

Regionalization

